



This versatile handheld radio supports both NXDN and DMR digital protocols as well as mixed digital & FM analog operation, enabling it to serve with distinction in a wide range of enterprise- and operation-critical applications. Compact yet designed with durability in mind, it's packed with convenient features like Bluetooth® for hands-free operation and built-in GPS. Three different models are available: Full Keypad model with LCD, Standard Keypad model with LCD and a large 4-way D-pad, and the Basic Model without LCD or keypad. Additionally, for expansion capability a software license certification system facilitates extensive customization.



Full Keypad Model

Standard Keypad Model

Basic Model

● PRODUCT HIGHLIGHTS

- Multi-protocol digital radio: Designed to operate under an NXDN or DMR digital, and FM analog protocols
- NXDN Conventional and Type-C & Gen2 Trunking
- DMR Tier II & Site Roaming
- Mixed Digital & FM Analog Operation allows gradual migration at your own pace
- 4-Line Basic Frame (2-Line Main/Sub-LCD, icon & key guide) / 14 Characters
- 5-Line Text Message Frame (3 Lines of Text, icon & key guide)*
- 7-color Light Bar Indicator on the top panel
- 4-way Directional-pad (D-pad) for intuitive control and operation
- Built-in GPS Receiver/Antenna for effective fleet management
- Built-in Bluetooth for hands-free operation – Applicable Bluetooth profiles: HSP (Headset Profile provided) and SPP (Serial Port Profile available as an option)
- Renowned KENWOOD Audio Quality can be achieved with Active Noise Reduction (ANR) that utilizes built-in DSP
- Software DES and AES Encryptions for NXDN Conventional/Trunking and DMR Conventional protocols
- Built-in Motion Sensor (Man-down, Stationary and Motion Detection)
- IP54/55/67 and MIL-STD-810 C/D/E/F/G

*The number of lines may vary depending on the display language (character set).

● GENERAL FEATURES

- 1 Watt Audio Output Power
- UHF: 120 MHz capability
- Available models: Full Keypad (w/ LCD and full keypad), Standard Keypad (w/ LCD and 4-way large D-pad/4 key), and Basic (w/o LCD and keypad)
- 260 CH/128 Zones (64 CH/4 Zones for Basic model)
- Maximum of 1,000 CH/Radio with option
- Intrinsically Safe Option (Available later)
- Paging Call
- Emergency Call
- Status/Text Message
- Remote Stun/Kill/Check

● DIGITAL - NXDN MODE

- NXDN Type-C & Gen2 Trunked
- NXDN Conventional
- 6.25 & 12.5 kHz Channels
- All Group Call
- Over-the-Air Alias (OAA)
- Over-the-Air Programming (OTAP)

● DIGITAL - DMR MODE

- Complies with ETSI DMR Tier II standards
- Two-slot TDMA in 12.5 kHz channels
- Call Interruption
- Dual-slot Direct Mode
- ARC4 Encryption
- Energy Efficient

● ANALOG - FM MODE

- Conventional & LTR Trunking
- FleetSync/II: PTT ID ANI / Caller ID Display, Selective Group Call, Emergency Status / Text Messages
- MDC-1200: PTT ID ANI / Caller ID Display, Emergency, Radio Check / Inhibit
- QT / DQT, 2-Tone
- Built-in Voice Inversion Scrambler

OPTIONAL ACCESSORIES

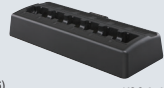
- **KNB-55L/57L/78L***
Li-ion BATTERY PACK
(7.4 V/1480 mAh, 7.4 V/2000 mAh,
7.4 V/2860 mAh)
- **KNB-56N**
Ni-MH BATTERY PACK
(7.2 V/1400 mAh)
- **KNB-68LC***
Li-ion BATTERY PACK
(7.4 V/2000 mAh, Intrinsically Safe)
*Available Later
- **KBP-5**
BATTERY CASE (6 AA)
- **KSC-25LS/25S**
RAPID CHARGER
(Li-ion Only/Tri-Chem)
- **KSC-256**
MULTIPLE CHARGER
(6-pocket)
- **KMB-30**
MOUNTING BRACKET (for KSC-256)



KNB-57L



KSC-25S



KSC-256

- **KVC-23**
VEHICULAR
CHARGER
- **KRA-22/23**
VHF/UHF HELICAL
ANTENNA
(Low Profile)
- **KRA-26**
VHF HELICAL ANTENNA
(Standard Length)
- **KRA-27**
UHF WHIP ANTENNA
(Standard Length)
- **KRA-41/42**
VHF/UHF STUBBY
ANTENNA



KRA-22 KRA-23



KRA-41 KRA-42

- **KRA-25/28**
HIGH GAIN (Whip)/
BROADBAND VHF (Whip)
- **KEP-1/2**
EARPHONE
(3.5 mm/2.5 mm)
- **KCM-45D**
SPEAKER
MICROPHONE
(IP54/55 & TDMA)
- **KHS-7/7A/10/22**
HEADSET (Single Muff / Single
Muff & In-line PTT / Heavy Duty
/ Behind-the-Head)



- **KHS-8/9**
PALM MICROPHONE WITH
EARPHONE (2-wire/3-wire)
- **KHS-26/27/31C**
HEADSET (with EAR BUD IN-
LINE PTT / with D-RING IN-
LINE PTT /
with C-RING)
- **KBH-11**
BELT CLIP (2.5")
- **KPG-180AP**
OTAP MANAGER
- **KLH-207**
NYLON CASE
- **KLH-206**
LEATHER CASE



All accessories and options may not be available in all markets.
Contact an authorized KENWOOD dealer for details and complete list of all accessories and options.

SPECIFICATIONS

GENERAL	NX-3220	NX-3320
Frequency Range	136-174 MHz	400-520 MHz
Max. Channels per Radio	Up to 1000 channels with option	
Number of Channels	260 (64 for no LCD models)	
Number of Zones	128 (4 for no LCD models)	
Channel Spacing	Analog 12.5/15/20/25*1/30*1 kHz	Digital 12.5/25*1 kHz
	Digital 6.25/12.5 kHz	Digital 6.25/12.5 kHz
Power Supply	7.5 V DC ±20 %	
Battery Life (FDMA/TDMA) 5-5-90	KNB-55L (1,480 mAh)	Approx. 8 hours/Approx. 9.5 hours
	KNB-56N (1,400 mAh)	Approx. 8 hours/Approx. 9 hours
	KNB-57L (2,000 mAh)	Approx. 11 hours/Approx. 13.5 hours
	Operating Temperature	-22°F to +140°F (-30°C to +60°C)
Frequency Stability	± 2.0 ppm	± 1.0 ppm
Dimensions (W x H x D) *Projections not included	Radio only	2.20 x 4.71 x 1.43 in (56 x 119.6 x 36.4 mm)*2
	With KNB-55L (1,480 mAh)	2.20 x 4.71 x 1.43 in (56 x 119.6 x 36.4 mm)*2
	With KNB-56N (1,400 mAh)	2.20 x 4.71 x 1.68 in (56 x 119.6 x 42.7 mm)*2
	With KNB-57L (2,000 mAh)	2.20 x 4.71 x 1.53 in (56 x 119.6 x 39 mm)*2
Weight (net)	Radio only	7.8 oz (220 g)*3
	With KNB-55L (1,480 mAh)	11.1 oz (315 g)*3
	With KNB-56N (1,400 mAh)	14.5 oz (410 g)*3
	With KNB-57L (2,000 mAh)	12.0 oz (340 g)*3
FCC ID	K44479000	K44479100
IC Certification	282F-479000	282F-479100

*1 25 and 30 kHz are not included in the models sold in the USA or US territories. *2 Dimensions for Full Keypad/Std Keypad Models *3 Weight for Full Keypad Model
Analog measurements made per TIA603. Specifications are measured according to applicable standards.
Specifications shown are typical and subject to change without notice, due to advancements in technology.

RECEIVER	NX-3220	NX-3320
Sensitivity	NXDN 6.25 kHz Digital, 3 % BER	0.20 µV
	NXDN 12.5 kHz Digital, 3 % BER	0.25 µV
	DMR 12.5 kHz Digital, 5 % BER	0.30 µV
	DMR 12.5 kHz Digital, 1 % BER	0.45 µV
Selectivity	Analog, 12 dB SINAD	0.25 µV
	Analog @ 12.5 kHz	65 dB
Intermodulation	Analog @ 25 kHz	72 dB
		70 dB
Spurious Rejection		70 dB
Audio Distortion		3 %
Audio Output (Internal Speaker)	3 % Distortion	500 mW/8 Ohms
	5 % Distortion	1000 mW/8 Ohms
TRANSMITTER	NX-3220	NX-3320
RF Power Output (High / Mid / Low)	5 W / 4 W / 1 W	
Spurious Emission	-70 dB	
FM Hum & Noise	Analog @ 25 kHz	45 dB
	Analog @ 12.5 kHz	40 dB
Audio Distortion	3 %	
Digital Protocol	ETSI TS 102 361-1, -2, -3	
Emission Designator	16K0F3E*1, 11K0F3E, 8K30F1E, 8K30F1D, 8K30F7W, 7K60FXD, 7K60FXE, 4K00F1E, 4K00F1D, 4K00F7W, 4K00F2D	

APPLICABLE MIL-STD & IP

MIL Standards	Methods / Procedures				
	810C	810D	810E	810F	810G
Low Pressure	500.1/ I	500.2/ I, II	500.3/ I, II	500.4/ I, II	500.5/ I, II
High Temperature	501.1/ I, II	501.2/ I, II	501.3/ I, II	501.4/ I, II	501.5/ I, II
Low Temperature	502.1/ I	502.2/ I, II	502.3/ I, II	502.4/ I, II	502.5/ I, II
Temp. Shock	503.1/ I	503.2/ I	503.3/ I	503.4/ I, II	503.5/ I
Solar Radiation	505.1/ I	505.2/ I	505.3/ I	505.4/ I	505.5/ I
Rain*	506.1/ I, II	506.2/ I, II	506.3/ I, II	506.4/ I, III	506.5/ I, III
Humidity	507.1/ I, II	507.2/ II, III	507.3/ II, III	507.4	507.5/ II
Salt Fog	509.1/ I	509.2/ I	509.3/ I	509.4	509.5
Dust	510.1/ I	510.2/ I	510.3/ I	510.4/ I, III	510.5/ I
Vibration	514.2/ VIII, X	514.3/ I	514.4/ I	514.5/ I	514.6/ I
Shock	516.2/ I, II, V	516.3/ I, IV	516.4/ I, IV	516.5/ I, IV	516.6/ I, IV
International Protection Standards	IP54, IP55, IP67				
Dust & Water*	IP54, IP55, IP67				

*Audio accessory connector must be covered.

• The Bluetooth word mark and logos are registered trademarks owned by the Bluetooth SIG, Inc. • NXDN™ is a trademark of JVCENWOOD Corporation and Icom Inc. • NEXEDGE® is a registered trademark of JVCENWOOD Corporation.
• FleetSync® is a registered trademark of JVCENWOOD Corporation. • All other trademarks are the property of their respective holders.

JVCENWOOD USA Corporation

Communications Sector Headquarters

3970 Johns Creek Court, Suite 100, Suwanee, GA 30024-1265

Order Administration/Distribution

P.O. BOX 22745, 2201 East Dominguez St., Long Beach, CA 90801-5745

<http://www.kenwood.com/usa/com/>

<http://comms.kenwood.com/en/>

JVCENWOOD Canada Inc.

Canadian Headquarters and Distribution

6070 Kestrel Road, Mississauga, Ontario, Canada L5T 1S8

<http://www.kenwood.com/ca/com/>

<http://comms.kenwood.com/en/>



ISO9001 Registered
Communications Systems Division
JVCENWOOD Corporation

CL862K-E-2